

C21e : Solar electric roof tile

C21e : Solar electric roof tile

C21e is a unique, roof integrated, solar electric tile using the most efficient solar cells in the world.

This particular solar application works best for new builds, because each photovoltaic tile replaces four conventional roof tiles and is attached straight to the roof battens.

C21e has many benefits over conventional bolt-on solar panel systems and has won a host of industry awards.

C21e - Key Features

- **No extra planning** - no need to alter roof lines, colour or pitch. C21e tiles sit flush with conventional roof tiles.
- **Standard installation** - tiles fit with conventional roofing practice without the need to adjust battens. One solar tile takes the place of four standard tiles.
- **No specialist skills** - all roofing work is carried out by the roofing contractor allowing electrical and plumbing work to follow build programme.
- **Fast to fit** - tiles are integrated in exactly the same way as conventional interlocking tiles.
- **High power output** - 52Wp per tile, less than 8 square metres per kWp (kilowatt peak).
- **Discreet 'SunPower' PV laminate** - blends superbly with regular roof tiles offering an unrivalled aesthetic.
- **Back mounted contact strips** - increase effective collector area and reduce surface glare, typical with standard solar cell technology.
- **Integrated 'thru-flow' ventilation** - enhances PV performance.
- **Power output** - guaranteed for 20 years from date of commissioning.
- **No electrical work required on roof** - avoiding delays to the build programme.
-

Tiles arrive on site as complete units - avoiding the need for on-roof assembly.



C21e solar electric roof tiles - system sizes

Solarcentury	Description	kWp Å¹	kWh p/aÅ¹Å¹	CO2 Offset p/a	C21e tiled area mÅ²
C21e System					(approx)
Product Code					
C21E-018GB-01	Solarcentury C21e - 18 solar electric roof tile system	0.94	777	441kg	7.0
C21E-024GB-01	Solarcentury C21e - 24 solar electric roof tile system	1.25	1036	588kg	9.3
C21E-036GB-01	Solarcentury C21e - 36 solar electric roof tile system	1.87	1554	883kg	14.0
C21E-048GB-01	Solarcentury C21e - 48 solar electric roof tile system	2.50	2072	1177kg	18.7

Definitions

kWp: The system's peak electrical output, under standard test conditions

kWh: The predicted energy generated by the system each year, based on south facing roof at optimal pitch.

CO2 offset: Amount of carbon dioxide saved through on-site generation

¹Measured under standard test conditions of 1000W/m2 irradiance, AM 1.5 spectrum, 25C cell temperature.

¹¹Based on a south facing roof system in the UK, generating 830 kWh per kWp.



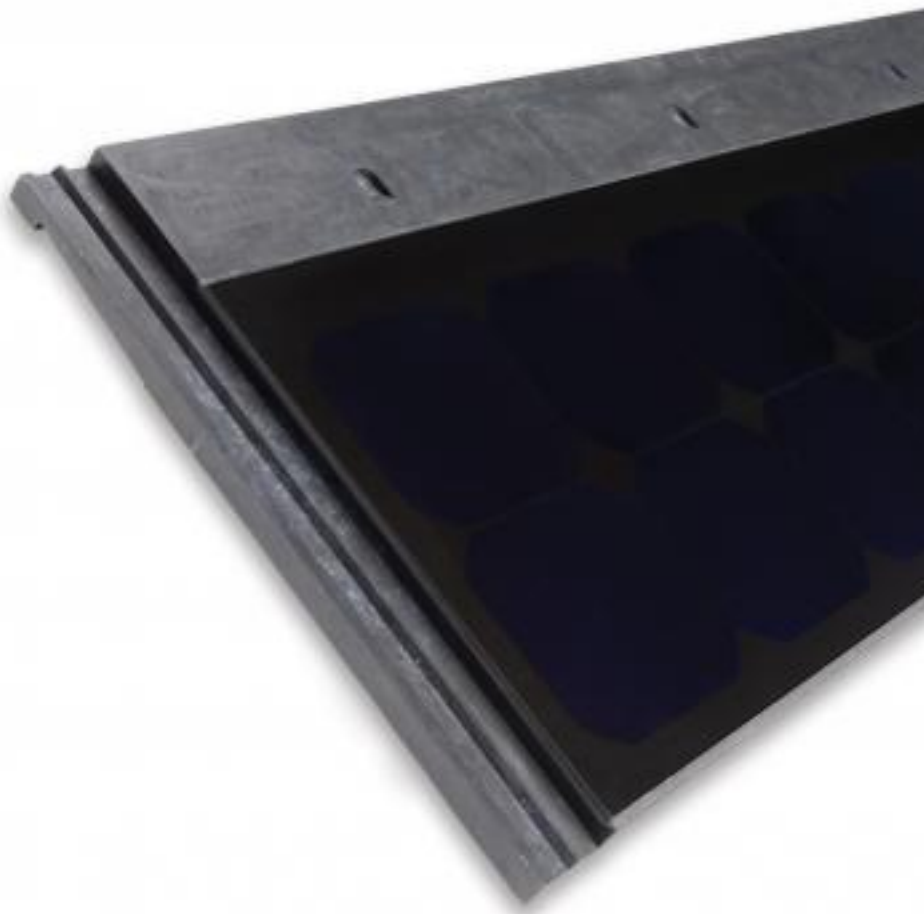
To view our C21e installation video, please hit the 'play' button below:



Price £ 0.00

Solarcentury

PV-C21-M52D
Assembled in the UK
52
420
1220
0
8



No
Yes
mc - added
relevant
Knowledge
Base files.
mc - added
caption to
image
No relation